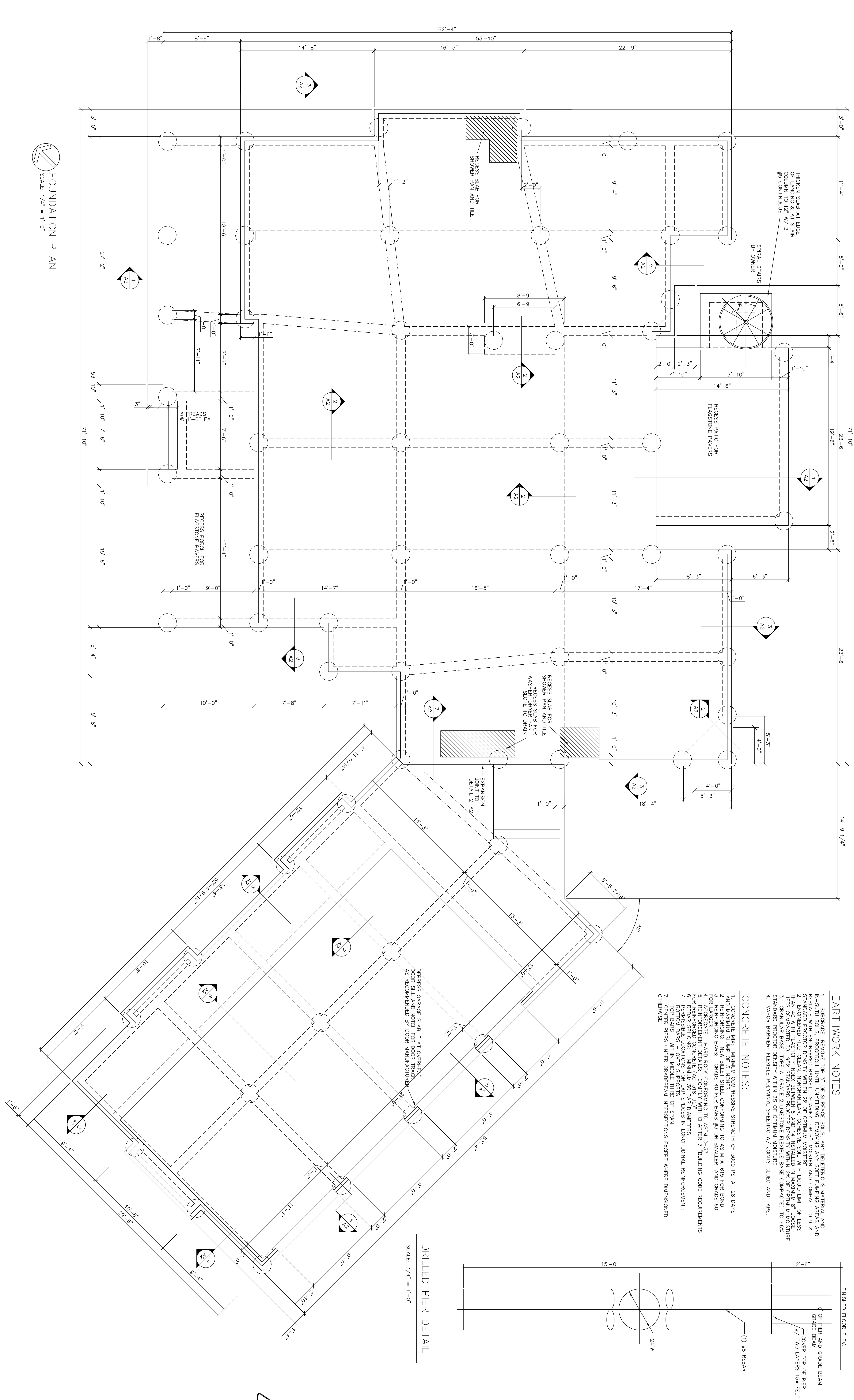
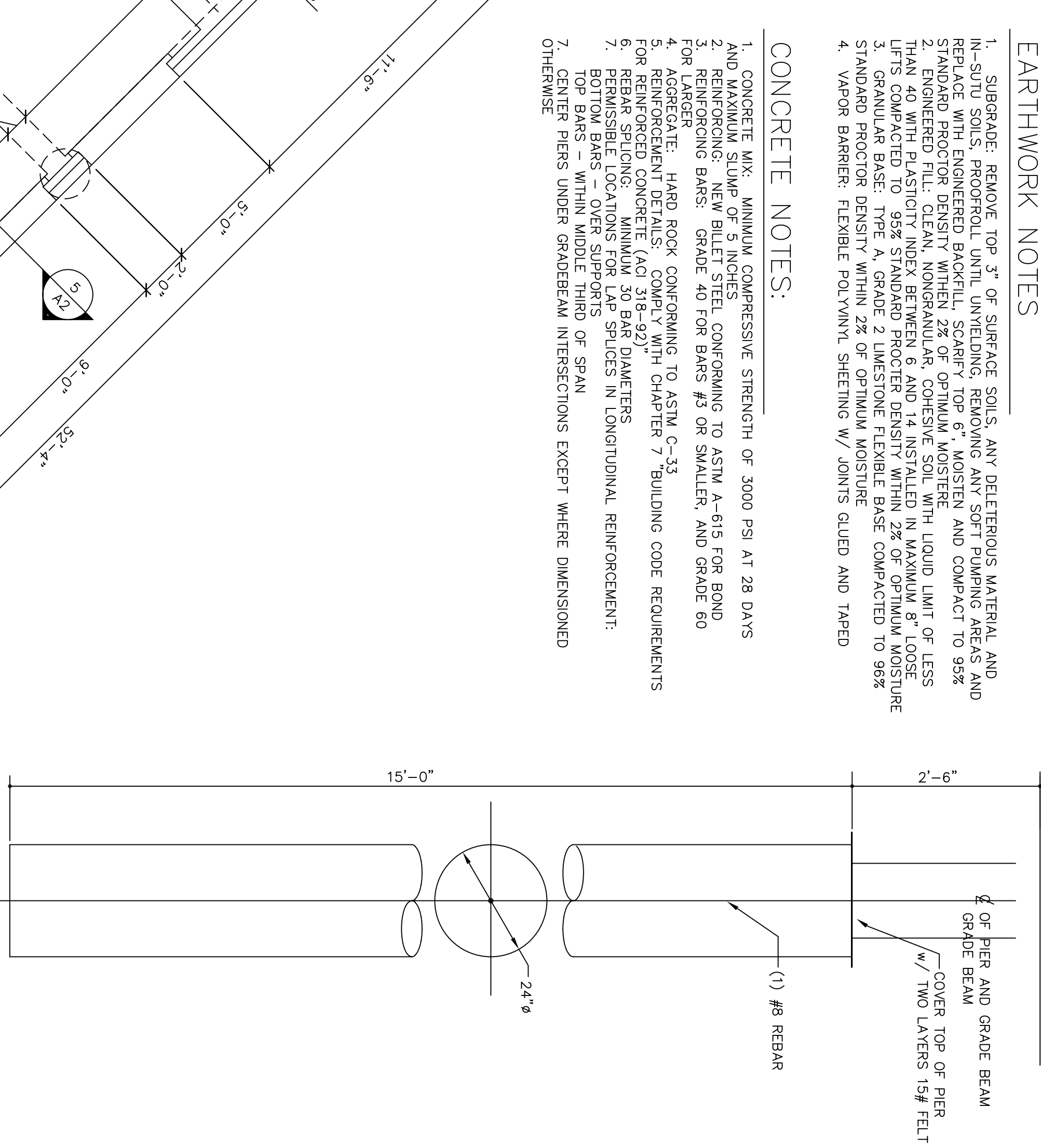


1 PORCH CONNECTION SCALE 3/4" = 1'-0"
 2 INTERMEDIATE BEAM SCALE 3/4" = 1'-0"
 3 EXTERIOR BEAM SCALE 3/4" = 1'-0"
 4 GARAGE BEAM SCALE 3/4" = 1'-0"
 5 GARAGE BEAM SCALE 3/4" = 1'-0"
 6 GRADEBEAM @ THRESTOP SCALE 3/4" = 1'-0"
 7 EXPANSION JOINT DETAIL SCALE 3/4" = 1'-0"



FOUNDATION PLAN
 SCALE 1/4" = 1'-0"



DRILLED PIER DETAIL
 SCALE 3/4" = 1'-0"

EARTHWORK NOTES:

1. SURGRADE REMOVE TOP 3" OF SURGRADE SOILS, ANY DELETTERIOUS MATERIAL AND IN-SITU SOILS, PROTECT UNTIL UNWELDING, REMOVING ANY SORT PLACING ARCS AND STANDARD PROCTOR DENSITY WITHIN 2% OF OPTIMUM MOISTURE AND COMPACT TO 95% STANDARD PROCTOR DENSITY WITHIN 6 AND 14 INCHES IN MAXIMUM 5" COURSES. MORE THAN 40 WITH PLASTICITY INDEX BETWEEN 6 AND 14 INSTALLED IN MAXIMUM 5" COURSES COMPACTED TO 95% STANDARD PROCTOR DENSITY WITHIN 2% OF OPTIMUM MOISTURE. STANDARD PROCTOR DENSITY WITHIN 2% OF OPTIMUM MOISTURE COMPACTED TO 95%.
2. VAPOR BARRIER FLEXIBLE POLYETHYLENE SHEETING W/ JOINTS GLEED AND TAPED.
3. CONCRETE MIX: MINIMUM COMPRESSIVE STRENGTH OF 3000 PSI AT 28 DAYS AND MAXIMUM SLUMP OF 8 INCHES. CONFORMING TO ASTM A-618 FOR BOND.
4. REINFORCING BARS: GRADE 40 FOR BARS #8 OR SMALLER, AND GRADE 60 FOR #11 AND LARGER.
5. REINFORCING: HAND ROCK CONFORMING TO ASTM C-33.
6. REINFORCING: CONTRACT WITH CHAPTER 7 BUILDING CODE REQUIREMENTS.
7. REBAR SPLICING: MANUAL TO BAR DIAMETERS.
8. REBAR SPLICING: OVERLAP: LONGITUDINAL REINFORCEMENT: 1. BOTTOM BARS - OVER LAPMENTS OF SPAN.
9. CENTER REBAR UNDER GRADEBEAM INTERSECTIONS EXCEPT WHERE DIMENSIONED OTHERWISE.