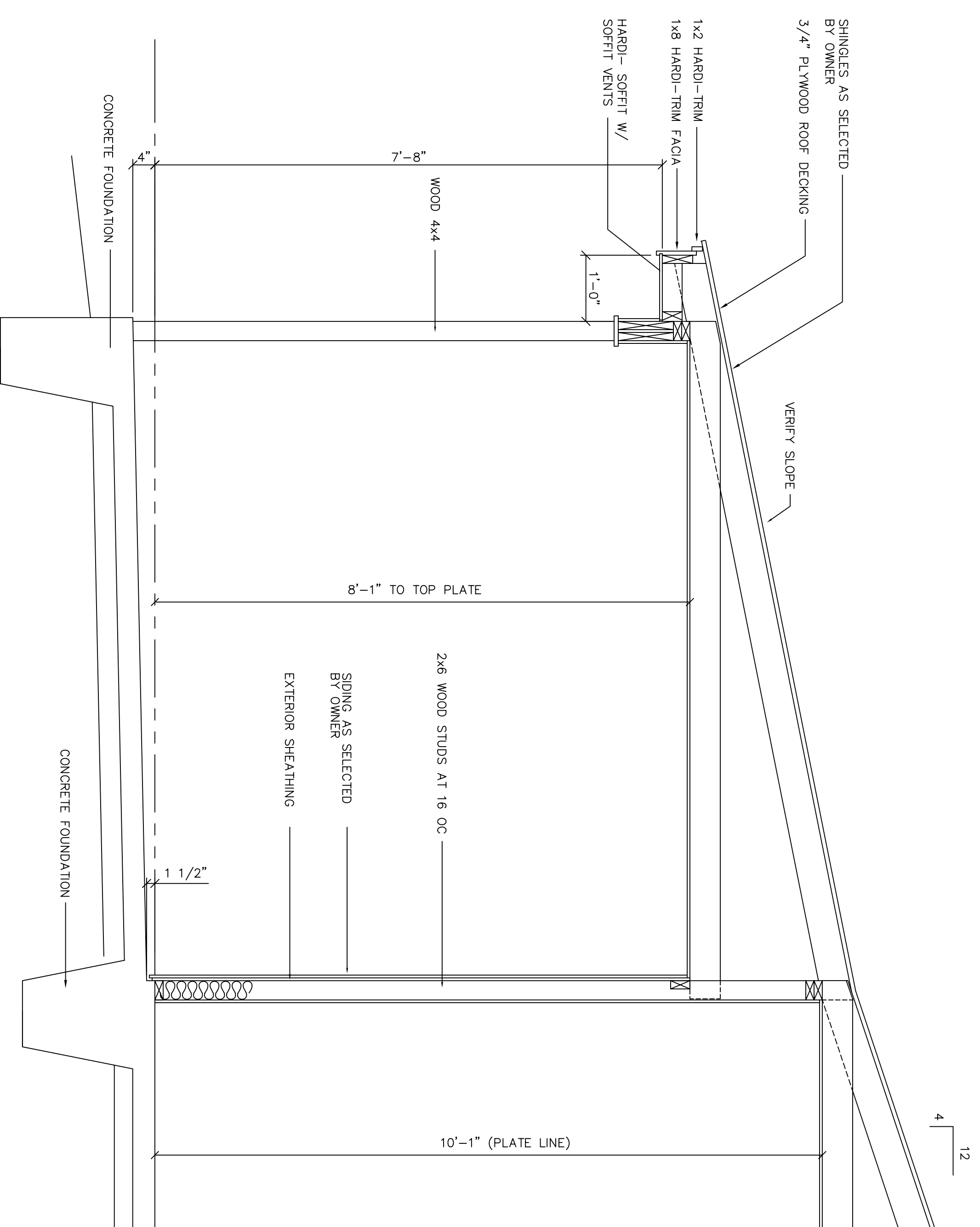
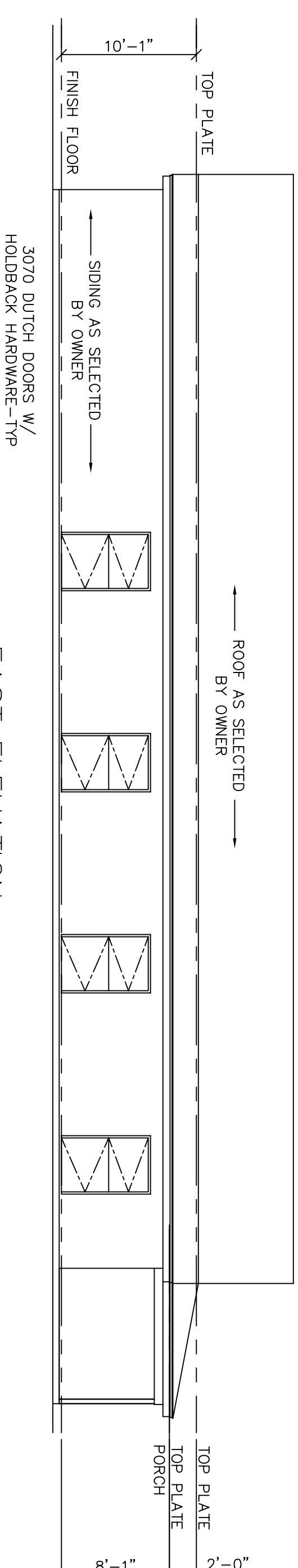


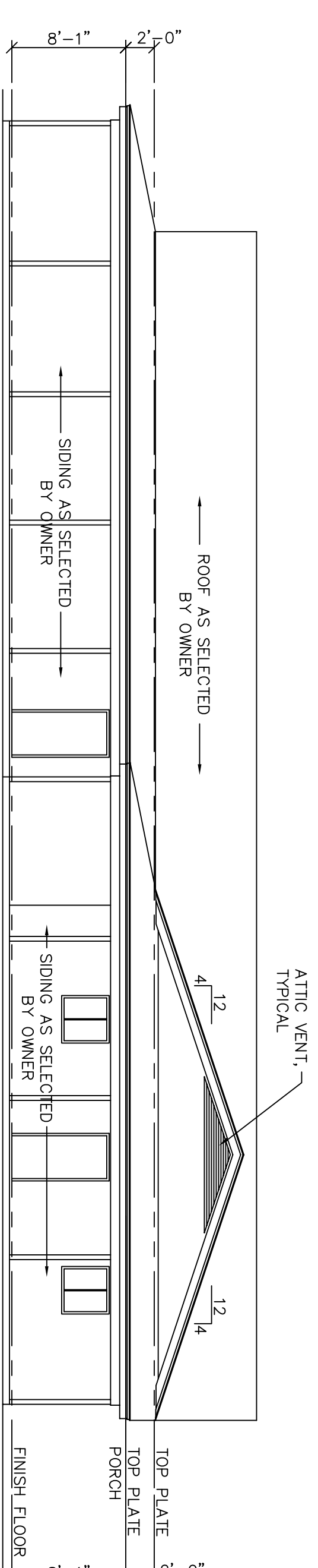
1 EXTERIOR WALL SECTION
SCALE: 3/4" = 1'-0"



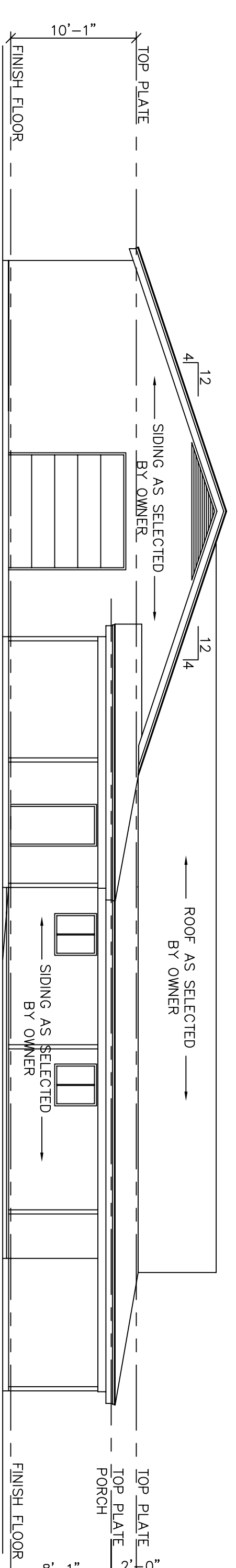
2 WALL SECTION @ PORCH
SCALE: 3/4" = 1'-0"



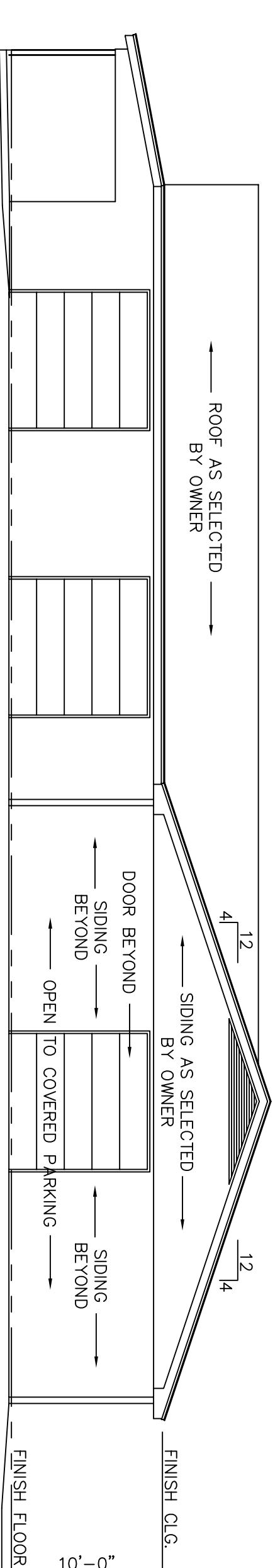
1 EAST ELEVATION
SCALE: 1/8" = 1'-0"



2 WEST ELEVATION
SCALE: 1/8" = 1'-0"



3 NORTH ELEVATION
SCALE: 1/8" = 1'-0"



4 SOUTH ELEVATION
SCALE: 1/8" = 1'-0"

