

**GENERAL NOTES:**

1. MAINTAIN ALL EXISTING UTILITIES UNLESS OTHERWISE NOTED. VERIFY ALL DIMENSIONS AND CONDITIONS PRIOR TO BEGINNING CONSTRUCTION. VERIFY ALL DIMENSIONS AND CONDITIONS PRIOR TO BEGINNING CONSTRUCTION. VERIFY ALL DIMENSIONS AND CONDITIONS PRIOR TO BEGINNING CONSTRUCTION.
2. MAINTAIN ALL EXISTING UTILITIES UNLESS OTHERWISE NOTED. VERIFY ALL DIMENSIONS AND CONDITIONS PRIOR TO BEGINNING CONSTRUCTION. VERIFY ALL DIMENSIONS AND CONDITIONS PRIOR TO BEGINNING CONSTRUCTION.
3. MAINTAIN ALL EXISTING UTILITIES UNLESS OTHERWISE NOTED. VERIFY ALL DIMENSIONS AND CONDITIONS PRIOR TO BEGINNING CONSTRUCTION. VERIFY ALL DIMENSIONS AND CONDITIONS PRIOR TO BEGINNING CONSTRUCTION.
4. MAINTAIN ALL EXISTING UTILITIES UNLESS OTHERWISE NOTED. VERIFY ALL DIMENSIONS AND CONDITIONS PRIOR TO BEGINNING CONSTRUCTION. VERIFY ALL DIMENSIONS AND CONDITIONS PRIOR TO BEGINNING CONSTRUCTION.
5. MAINTAIN ALL EXISTING UTILITIES UNLESS OTHERWISE NOTED. VERIFY ALL DIMENSIONS AND CONDITIONS PRIOR TO BEGINNING CONSTRUCTION. VERIFY ALL DIMENSIONS AND CONDITIONS PRIOR TO BEGINNING CONSTRUCTION.

**FRAMING NOTES:**

1. USE MINIMUM STUD GRADE FOR STUDS.
2. USE MINIMUM #2 GRADE FOR RAFTERS AND JOISTS.
3. USE OF UTILITY GRADE LUMBER EXCEPT FOR BLOCKING IS PROHIBITED.
4. PROVIDE CONCRETE BLOCKING IN WALLS AND CEILINGS FOR INSTALLATION OF TOILET ACCESSORIES, TOILET FIXTURES, CABINETS, CEILING PANS, SUSPENDED LIGHTING, ETC.
5. INSTALL ROOF BEAMS USING ALUMINUM "I" SPACERS AS DIRECTED BY DECK MANUFACTURER.
6. PROVIDE SAME THICKNESS OF BLOCKING THROUGHOUT USING 1/2" THICKNESS FOR 16" RAFTER SPACING OR 3/4" THICKNESS FOR 24" RAFTER SPACING.

**MASONRY NOTES:**

1. MASONRY WORK SHALL BE PERFORMED IN ACCORDANCE WITH THE MASONRY INSTITUTE OF AMERICA'S SPECIFICATIONS.
2. USE MASONRY SAW FOR ALL BRICK CUTS. BREAKING BRICKS TO SIZE IS PROHIBITED.
3. LAY BRICK IN RUNNING BOND EXCEPT WHERE INDICATED.
4. USE OF CUT BRICK IN RUNNING BOND OF LESS THAN 5" LONG (HALF BRICK) IS PROHIBITED.
5. DO NOT LAY BRICK WITH HOLES EXPOSED. USE SOLID BRICK WHERE REQUIRED.
6. USE STOPMOLE TO MAINTAIN PROPER ELEVATION OF BRICK COURSE.
7. USE 3/8" WIRE MESH JOINTS TYPICALLY FOR BRICKWORK. INSERT JOINTS TO MINIMUM OF 1/2" BETWEEN THE LAST FEW BRICK TO MAINTAIN PROPER ALIGNMENT OF MASONRY WORK THROUGHOUT.
8. REMOVE EXCESS MORTAR FROM BACK SIDE OF BRICK AND MAINTAIN A CLEAN JOINT BETWEEN BRICK AND SEALING.
9. PROVIDE WEERS AT 4' OC IN FIRST COURSE OF MASONRY AT BRICK SHELF USING 4" LENGTHS OF 1/4" DIA WIRE SET IN THE JOINT FROM CAVITY TO EXTERIOR OF WALL.

**MECHANICAL NOTES:**

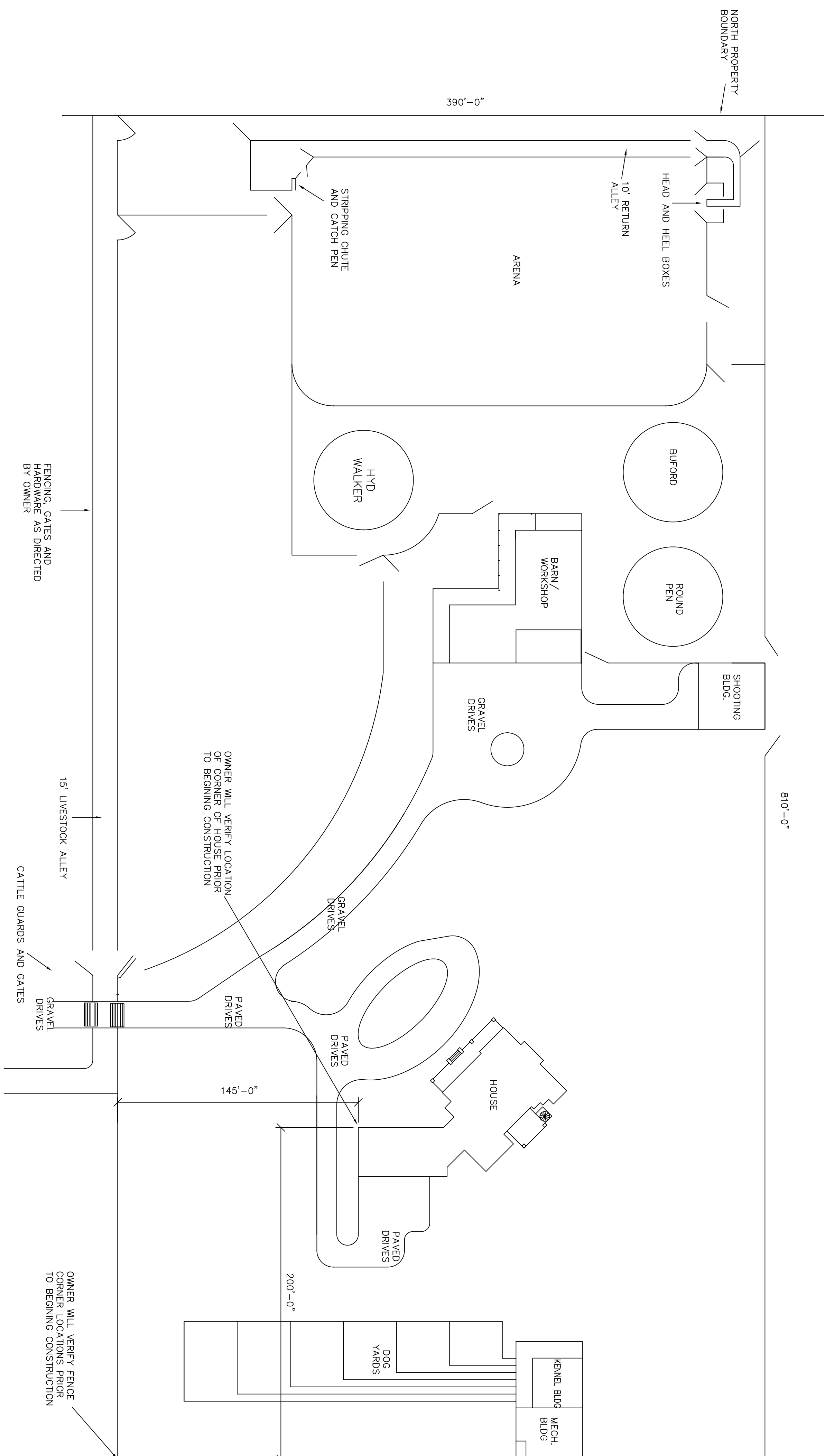
1. MECHANICAL SYSTEMS AND EQUIPMENT SHALL BE SIZED BY CONTRACTOR TO BE SUBMITTED FOR APPROVAL BY THE ARCHITECT.
2. FURNISH COMPLETE HEATING, VENTILATION AND AIR CONDITIONING SYSTEM WITH DUCTWORK FOR EACH FLOOR OR HOIST. OMISSION OF SPECIFIC REFERENCE TO ANY PART OF WORK NECESSARY FOR SUCH COMPLETE INSTALLATION SHALL NOT BE INTERPRETED AS RELIEFING CONTRACTOR FROM FURNISHING COMPLETE INSTALLATION.
3. MATERIALS, EQUIPMENT, INSTALLATION AND DESIGN SHALL BE IN ACCORDANCE WITH CITY OF ABILENE MECHANICAL CODE.
4. EQUIPMENT, ACCESSORIES, AND CONTROLS MUST BE CERTIFIED BY UNDERWRITERS LABORATORIES, AMERICAN GAS ASSOCIATION AND AMERICAN REFRIGERATION INSTITUTE AND CARRY THEIR LABELS OF APPROVAL.
5. APPROVAL OF OWNER AND ARCHITECT.
6. SYSTEM SHALL BE DESIGNED BY REGISTERED PROFESSIONAL ENGINEER USING LATEST DESIGN CRITERIA AND RECOMMENDATIONS OF AMERICAN SOCIETY OF HEATING, REFRIGERATION AND AIR CONDITIONING ENGINEERS (ASHRAE) AND THE NATIONAL BOARD OF FIRE UNDERWRITERS (NFPA) INCLUDING DUCTS, REGISTERED AND ORIFICES.
7. SYSTEM SHALL BE BASED ON FOLLOWING CONDITIONS:  
 COMPLETE WITH DIRECT EXPANSION MECHANICAL REFRIGERATION SYSTEM AND GAS FURNACE ROOF TOP UNITS. COMPLETE WITH FACTORY BUILT CHIBG AND FACTORY CONTROLS.  
 WINTER: OUTDOOR AIR TEMPERATURE OF 20 DEGREES F. DB  
 INDOOR AIR TEMPERATURE OF 70 DEGREES F. DB  
 SUMMER: OUTDOOR AIR TEMPERATURE OF 95 DEGREES F. DB AND 70 DEGREES F. WB  
 INDOOR AIR TEMPERATURE OF 70 DEGREES F. DB AND 50% RELATIVE HUMIDITY.  
 PROVIDE OWNER WITH ALTERNATE BIDS FOR CONVENTIONAL HEAT PUMP AIR CONDITIONING AND GAS FURNACE HEATING SYSTEMS. PROVIDE OWNER WITH ALTERNATE BIDS FOR CONVENTIONAL HEAT PUMP AIR CONDITIONING AND GAS FURNACE HEATING SYSTEMS. PROVIDE OWNER WITH ALTERNATE BIDS FOR CONVENTIONAL HEAT PUMP AIR CONDITIONING AND GAS FURNACE HEATING SYSTEMS.

**PUMPING NOTES:**

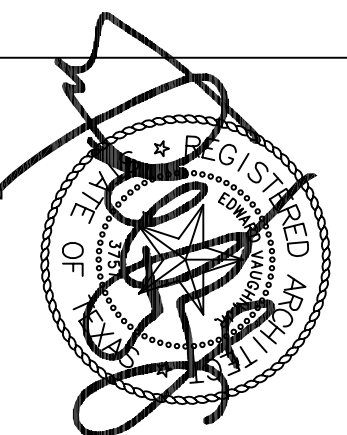
1. PROVIDE DESIGN FOR COMPLETE PUMPING SYSTEM LAYOUT INCLUDING CONNECTIONS TO WATER, SEWER AND GAS UTILITIES. PUMPING SYSTEMS SHALL BE INSTALLED AND ALL OTHER ITEMS OF WORK SHALL BE SUBMITTED TO OWNER AND ARCHITECT FOR APPROVAL.
2. MATERIALS, EQUIPMENT, INSTALLATION AND DESIGN SHALL BE IN ACCORDANCE WITH CITY OF ABILENE PUMPING CODE.
3. PAY WATER AND SEWER MAPS, CHARGES, FEES, PERMIT CHARGES AND SECURE LICENSES AND INSPECTION CERTIFICATES AS REQUIRED FOR INSTALLATION OF WORK.
4. PROVIDE OWNER WITH CERTIFICATES OF INSPECTION AS REQUIRED BY LOCAL BUILDING DEPARTMENT UPON COMPLETION OF WORK.
5. NO EXPOSED LINES, CLEAN OUTS, OR VALVES SHALL BE INSTALLED WITHOUT PRIOR APPROVAL OF OWNER.
6. FURNISH ACCESSIBLE CEILINGMOUNT TO ALL POINTS IN SEWER SYSTEM. PROVIDE HINGED, CHROME PLATED COVERS AT CEILINGMOUNTS IN EXPOSED WALLS.
7. TEST ALL PUMPING SYSTEMS BEFORE THEY ARE COVERED, INSULATED OR MADE UNACCESSIBLE FOR COMPLETE INSPECTION AT ALL JOINTS. PERFORM TESTS IN PRESENCE OF ARCHITECT OR INSPECTOR AND IN ACCORDANCE WITH THEIR REQUIREMENTS AND REGULATIONS.

**ELECTRICAL NOTES:**

1. COMPLETE ELECTRICAL SYSTEM TO BE SIZED BY CONTRACTOR TO BE SUBMITTED TO ARCHITECT FOR APPROVAL.
2. FURNISH COMPLETE ELECTRICAL SYSTEM INCLUDING LIGHTING AND POWER DISTRIBUTION, TELEPHONE, LIGHTING, ETC. ACCESSORY CONSTRUCTION AND APPARATUS NECESSARY FOR PROPER OPERATION OF SYSTEM. ALL ELECTRICAL WORK SHALL BE IN ACCORDANCE WITH CITY OF ABILENE ELECTRICAL CODE.
3. MATERIALS, INSTALLATION AND DESIGN SHALL BE IN ACCORDANCE WITH CITY OF ABILENE ELECTRICAL CODE.
4. NO EXPOSED WIRING CONDUIT, COVER PLATES, ETC. SHALL BE INSTALLED WITHOUT APPROVAL OF OWNER AND ARCHITECT.



**SITE PLAN**  
SCALE: 1"=40'-0"



Project Number:  
V7841

Issue Date:  
05/19/06  
Revision # | Date

Sheet Title:  
SITE PLAN  
NOTES  
Sheet Number:

**A-1**  
OF 10A

**PRICE RESIDENCE**  
ABILENE, TEXAS

**JRH ARCHITECTS**  
1300 Summit Avenue Suite 418 Fort Worth, Texas 76102-4414  
817.732.5651 www.jrh-architects.com 817.732.0562